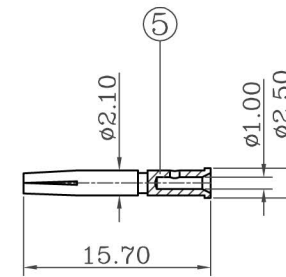
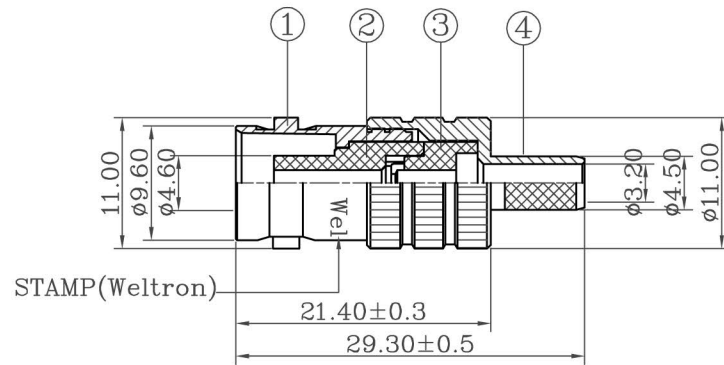
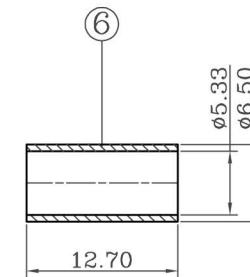


ROHS Compliant

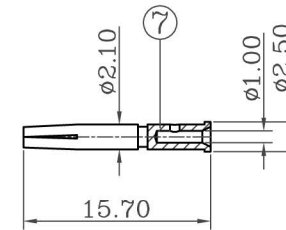
REVISIONS				
RevNo	Description	Date	Revision	Mender
1				
2				



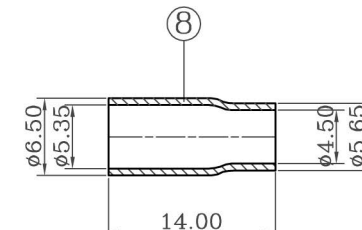
RG59U PIN



RG58U FERRULE



RG58U PIENUM PIN

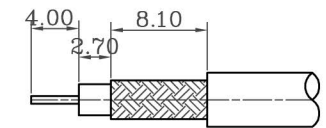


RG58U PIENUM FERRULE

NOTES:FINISH (PLATING THICKNESS IN MICRO-INCHES)

- 1.BRASS PER QQ-B-626
- 2.NICKEL PL.100 MIN. THICK OVER COPPER STRIKE
- 3.GOLD PL.3 MIN THICK OVER NICKEL PL.100 MIN. THICK OVER COPPER STRIKE
- 4.JIS H 3250,C 2700

- 1.CRIMPED FERRULE HEX CRIMP SIZE .213"
- 2.CRIMPED CONTACT PIN HEX CRIMP SIZE .068" OR TO SOLDER



RECOMMENDED CABLE STRIPPING DIM'S

8	FERRULE	NOTE 4	1	NOTE 2
7	CONTACT PIN	NOTE 1	1	NOTE 3
6	FERRULE	NOTE 4	1	NOTE 2
5	CONTACT PIN	NOTE 1	1	NOTE 3
4	REAR BODY	NOTE 1	1	NOTE 2
3	INSULATOR	POM	1	WHITE
2	INSULATOR	POM	1	WHITE
1	BODY	NOTE 1	1	NOTE 2
ITEM	DESCRIPTION	MATERIAL	Q'TY	FINISHED

<b>weltron®</b>		TITLE BNC FEMALE CRIMP TYPE 50 OHMS FOR RG58U, RG58U PIENUM CABLE		
DRAWING NO.		UNITS	MM	DESIGNED
MODEL NO.		SCALE	FIT	DRAWING
PART NO.	44-283-58	EDITION		CHECKED
CAD FILE				APPROVED
		UNLESS OTHERWISE SPECIFIED TOLERANCES:		
		0.5-15 = ±0.15	ANGLES ±5°	
		15-30 = ±0.30		
		30-120 = ±0.60		
		>120 = ±1.00		
		PUBLISH DATE		
		2011/03/19		
				3RD ANGLE