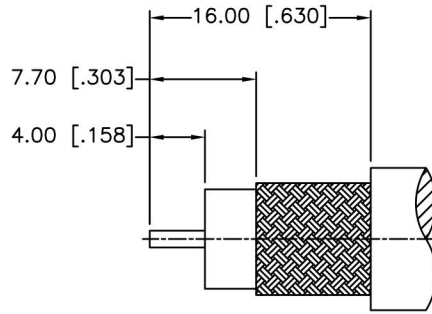
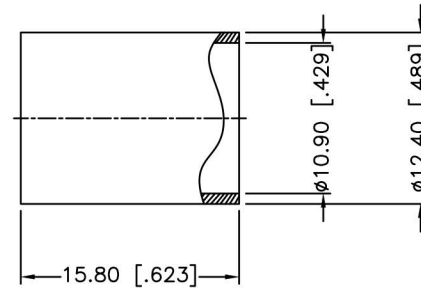
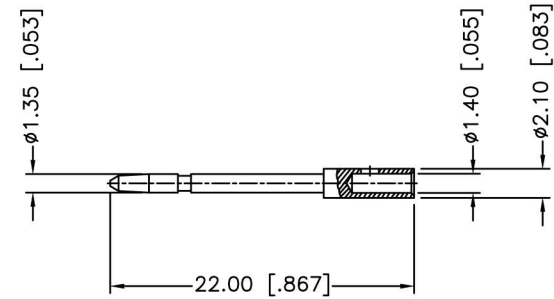
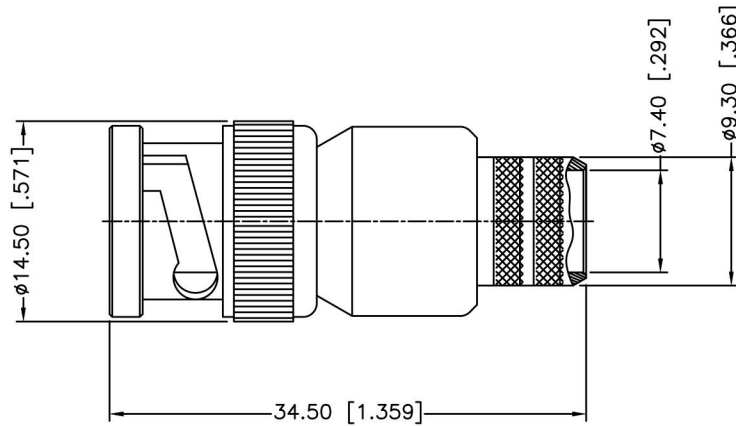


REV.	DATE	ECR NO.	DESCRIPTION
NC	02/20/03	XXXX	INITIAL RELEASE
A	08/15/04	XXXX	UPDATE DRAWING FORMAT/MODIFY CONTACT PIN
B	02/19/13	2450	CORRECT I.D. OF CONTACT PIN, CORRECT PART DESCRIPTION, UPDATE DRAWING FORMAT



RECOMMENDED  
CABLE STRIPPING DIM'S



1. IMPEDENCE:75 OHM
2. FREQUENCY RANGE:DC-4 GHz
3. DIELECTRIC WITHSTANDING VOLTAGE:1500 VRMS
4. INSULATION RESISTANCE:5000 MOHMS MIN.
5. DURABILITY:500 CYCLES
6. CRIMPED FERRULE HEX CRIMP SIZE .429"
7. CRIMPED CONTACT PIN HEX CRIMP SIZE .068"
8. TEMPERATURE RANGE:-65°C TO +165°C

10	FERRULE	BRASS	NICKEL	1
9	CONTACT PIN	BRASS	GOLD	1
8	SHELL	BRASS	NICKEL	1
7	GASKET	RUBBER	RED	1
6	RETAINER RING	BRASS	NICKEL	1
5	SPRING	SK5	NICKEL	1
4	WASHER	BRASS	NICKEL	1
3	BARREL	BRASS	NICKEL	1
2	INSULATOR	PTFE	NATURAL	1
1	BODY	BRASS	NICKEL	1
	DESCRIPTION	MATERIAL	FINISH	QTY

UNLESS OTHERWISE SPECIFIED DIMENSIONS ARE IN MILLIMETERS. DIMENSIONS IN [ ] ARE IN INCHES AND FOR CUSTOMER REFERENCE ONLY.

UNLESS OTHERWISE SPECIFIED TOLERANCES FOR MILLIMETERS ARE:


<math><0.5 \pm 0.05\text{mm}</math>  
 0.5 - 6mm  $\pm 0.10\text{mm}</math>  
 6 - 30mm  $\pm 0.20\text{mm}</math>  
 30 - 120mm  $\pm 0.30\text{mm}</math>  
 ANGLES  $\pm 1^\circ$$$$

UNLESS OTHERWISE SPECIFIED TOLERANCES FOR INCHES ARE:

<math><.020 \pm 0.002''</math>  
 .020 - .236 =  $\pm 0.004''</math>  
 .236 - 1.180 =  $\pm 0.007''</math>  
 1.180 - 4.724 =  $\pm 0.012''</math>  
 ANGLES  $\pm 1^\circ$$$$

DO NOT SCALE DRAWING

APPROVALS	DATE
DRAWN J.JI	02/19/13
CHECKED	
ISSUED	
SHEET 1 OF 1	
CAD FILE	



**WELTRON**®

PART DESCRIPTION  
BNC CRIMP PLUG FOR RG-8, 11 & 213 COMMERCIAL-MIL

PART NO.  
**44-290-11**

DWG. NO.	REV. B	SIZE A	SCALE NA
----------	--------	--------	----------