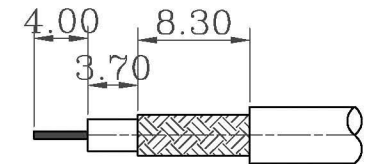
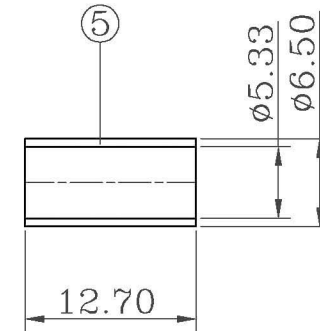
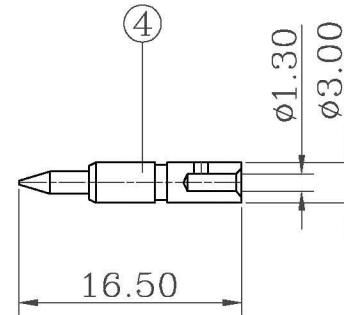
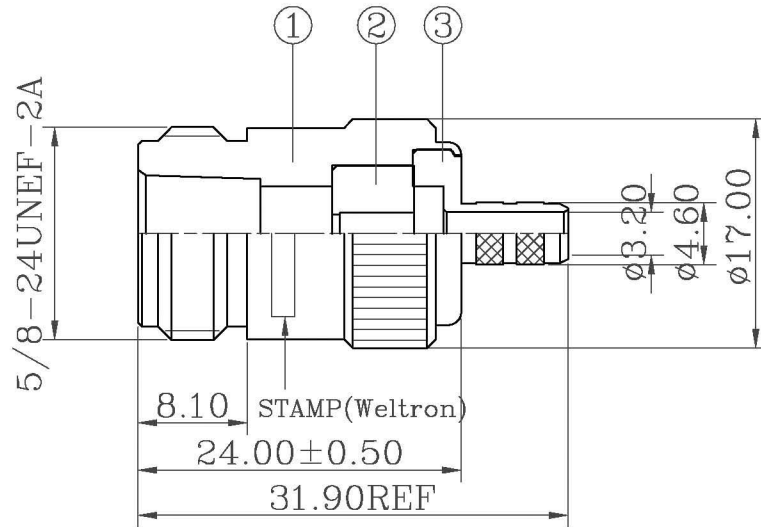


ROHS Compliant

REVISIONS

| RevNo | Description | Date | Revision | Mender |
|-------|-------------|------|----------|--------|
| 1     |             |      |          |        |
| 2     |             |      |          |        |



NOTES:FINISH (PLATING THICKNESS IN MICRO-INCHES)

- 1.BRASS PER QQ-B-626
- 2.SILVER PL.100 MIN. THICK OVER COPPER STRIKE
- 3.GOLD PL.3 MIN .THICK OVER NICKEL PL.100 MIN. THICK OVER COPPER STRIKE
- 4.TEFLON MIL-P-19468
- 5.JIS H 3250,C 2700

- 1.CRIMPED FERRULE HEX CRIMP SIZE .213"
- 2. CRIMPED CONTACT PIN HEX CRIMP SIZE .100"

RECOMMENDED  
CABLE STRIPPING DIM'S

|      |             |          |      |          |
|------|-------------|----------|------|----------|
| 5    | FERRULE     | NOTE 5   | 1    | NOTE 2   |
| 4    | CONTACT PIN | NOTE 1   | 1    | NOTE 3   |
| 3    | REAR BODY   | NOTE 1   | 1    | NOTE 2   |
| 2    | INSULATOR   | NOTE 4   | 1    | NATURAL  |
| 1    | BODY        | NOTE 1   | 1    | NOTE 2   |
| ITEM | DESCRIPTION | MATERIAL | Q'TY | FINISHED |

| <b>weltron</b> ® |                 |         |     | TITLE<br>RP N CRIMP JACK CRIMP, 50 OHM<br>FOR LMR200   |           |      |
|------------------|-----------------|---------|-----|--|-----------|------|
| PART NO.         | 44-263RP-LMR200 | UNITS   | MM  | UNLESS OTHERWISE SPECIFIED<br>TOLERANCES:<br>0.5-15 = ±0.15<br>15-30 = ±0.30<br>30-120 = ±0.60<br>>120 = ±1.00 | DESIGNED  | NQ   |
| MODEL NO.        |                 | SCALE   | FIT |  | DRAWING   | NQ   |
|                  |                 | EDITION | A1  | PUBLISH DATE   | APPROVED  | Andy |
| CAD FILE         |                 |         |     | 2010/01/03   | 3RD ANGLE |      |