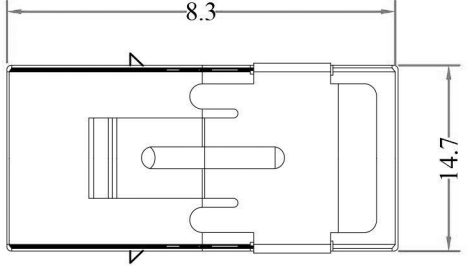
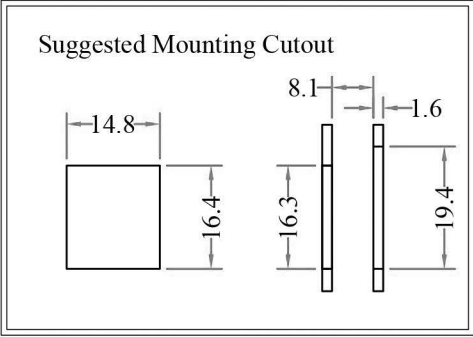


REV.	DESCRIPTION	DATE
A		08-2015



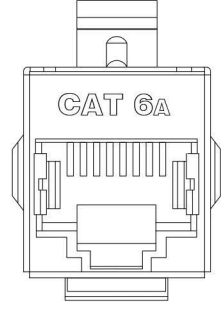
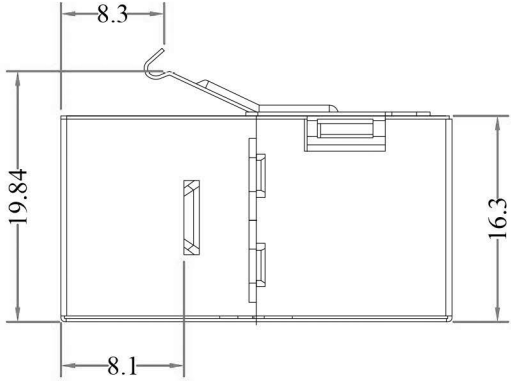
Keystone Snap Coupler


Feature

- * Couple two patch cables or mount in keystone wall plates or patch panels.
- * Exceed performance standard requirements.
- * Feature two RJ-45 modular jacks.
- * New press-fit technology with fully RoHS compliant. (No solder - No leads.)
- * Fits wall plates, surface mount box & patch panels.
- * Slim housing design enables High-Density mounting.
- * Work with T568A & T568B wiring.

Specifications

- * Coupler Housing: PC, UL94V-0
- * Contact: Gold plated with 60U”Nickel undercoat
- * PCB: FR-4, UL94V-0
- * Insulation Resistance: 500M
- * DC Current: 1.5amps
- * Exceed Cat5e, Cat6 & Cat6A performance Standards.



ITEM NUMBER	44-771-8C6A-SH		DRAWER	JL
TITLE	Shielded Snap-In Type Cat6 Keystone In-Line Coupler		CHECKED	
MATERIAL		SCALE		
REV.	A	UNIT	MM	
DRAWING NO:		Weltron ®		
ID(NO.)	56			